

# GYRO REPEATER

Dual scale 36:1 rotary dial

■ RS-485/RS-422 NMEA 0183

Protocol Support

■ Aluminum body

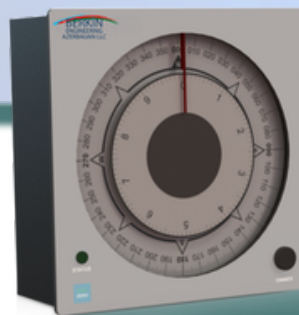
Brightness Adjustment



**BHR-246**

## BULK MOUNTED GYRO REPEATER FEATURES

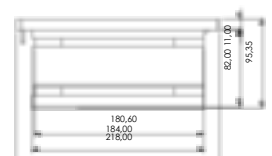
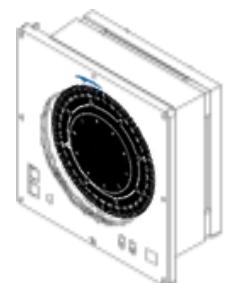
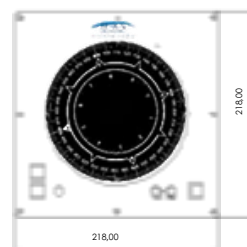
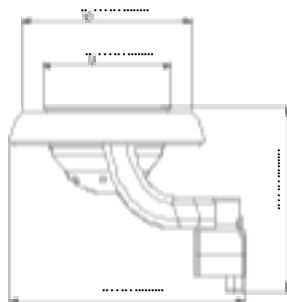
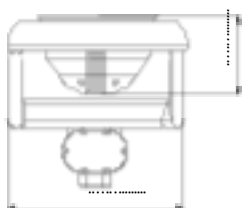
- Completely sealed and weatherproof
- Bearing repeater, gimbal mount feature



**SHR-246**

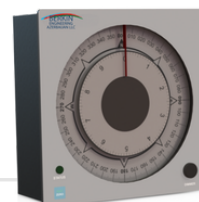
## CONSOLE TYPE GYRO REPEATER FEATURES

- Automatic Baudrate selection
- Genuine and magnetic source indicator
- Console type use
- Easy setup



# BULK MOUNTED GYRO REPEATER CONSOLE TYPE GYRO REPEATER

# GYRO REPEATER



TECHNICAL SPECIFICATIONS	BHR-246	SHR-246
<b>PHYSICALLY</b>		
Weight	10.5 kg	3,5 kg
Dimension (WxHxL)	464 x 325 x 348 mm	200 x 200 x 122 mm
Plate Thickness	8 mm	2 mm
Links	Integrated Terminal Box	1x15 pin D-sup data cable
Material	Marine grade aluminum, stainless fixings	Aluminum alloy enclosure
Colour	RAL7040	RAL9005
<b>OPERATIONAL</b>		
Performance	± 0.01° resolution	± 0.5° accuracy
Follow Rate	20° /sn	>20° /sn
Gimbal Angle	±45° pitch ve roll	-
Display	Dual scale 36:1 rotary dial display Blue = True Direction Yellow = Magnetic Direction	Rotating compass card dial display Blue = True Direction Yellow = Magnetic Direction
Route LEDs	Outer scale 1°, 5°, 10° and 45° marked as. Internal scale marked 0.1° and 1°	Outer scale 1°, 5°, 10° and 45° marked as. Internal scale marked 0.1° and 1°
Resolution	Local and remote dimming controlled LED array red tint	Local and remote dimming controlled LED array red tint
Dial Illumination		
<b>ELECTRICAL</b>		
Supply Voltage	24 VDC (9-36 VDC)	24 VDC (9-36 VDC)
Power Consumption	4 W	4 W
Data Protocol	RS485/RS422; NMEA0183, 12Mbit/s	RS-485/RS422; NMEA0183, 12Mbit/s
Data Sentences	THS, HDT, HDG, HDM	THS, HDT, HDG, HDM
<b>ENVIRONMENTAL</b>		
Operating Temperature Range	-25°C ~ +55°C	-15°C ~ +55°C
RoHS	Appropriate	Appropriate